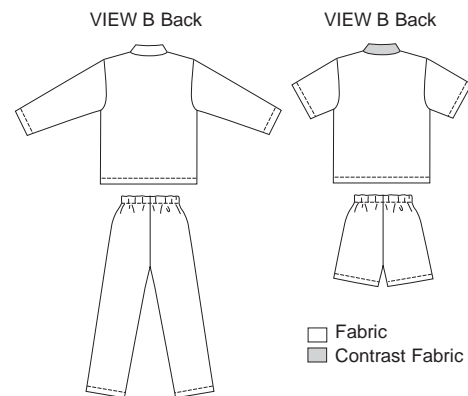




Boys' and Girls' pajamas have front button closure, extended shoulders, collar and patch pocket. Pants and shorts have elastic waist. View A has full length sleeves and long pants. View B has contrast collar and pocket extension, short sleeves and shorts.



KWIK•SEW®
price **2905**

DESIGNED FOR LIGHTWEIGHT WOVEN FABRICS

Suggested Fabrics: Cotton, cotton types, broadcloth, chambray, flannel, flannelette, silk like fabrics

BOYS' & GIRLS' PAJAMAS

Sizes: 7-8-10-12-14

Size	7	8	10	12	14	
Finished Length of Top at Center Back						
View A & B	19 (48)	20 (51)	21 1/4 (54)	22 1/2 (57)	23 3/4 (60)	" (cm)
Finished Inside Leg Seam						
View A	20 (51)	21 1/2 (54)	23 1/2 (59)	25 1/2 (64)	27 1/2 (69)	" (cm)
View B	2 1/2 (6)	2 3/4 (7)	3 (7.5)	3 1/4 (8)	3 1/2 (8.5)	" (cm)
Material Required: Fabric requirement allows for nap, one-way design or shading. Extra fabric may be needed to match design or for shrinkage.						
Fabric 60" (152 cm) Wide						
View A	2 1/8 (1.95)	2 1/4 (2.10)	2 3/8 (2.20)	2 1/2 (2.30)	2 5/8 (2.40)	yd (m)
View B Fabric	1 3/8 (1.30)	1 3/8 (1.30)	1 1/2 (1.40)	1 1/2 (1.40)	1 5/8 (1.50)	yd (m)
Contrast Fabric	1/8 (0.15)	1/8 (0.15)	1/8 (0.15)	1/8 (0.15)	1/8 (0.15)	yd (m)
Fabric 45" (115 cm) Wide						
View A	2 1/8 (1.95)	2 5/8 (2.40)	2 3/4 (2.55)	3 1/4 (3.00)	3 5/8 (3.35)	yd (m)
View B Fabric	1 1/2 (1.40)	1 5/8 (1.50)	1 3/4 (1.60)	1 3/4 (1.60)	2 (1.85)	yd (m)
Contrast Fabric	1/8 (0.15)	1/8 (0.15)	1/8 (0.15)	1/8 (0.15)	1/8 (0.15)	yd (m)
Fusible Interfacing 24" (60 cm) Wide						
View A or B	5/8 (0.60)	3/4 (0.70)	3/4 (0.70)	3/4 (0.70)	3/4 (0.70)	yd (m)
Notions: Thread, 3/4 yd (0.70 m) of 1" (2.5 cm) wide elastic, four 5/8" (15 mm) buttons.						